

Technical information

Anti-Tocilizumab antibody M9264

For research use only

Plesmanlaan 125
1066 CX Amsterdam
P.O. Box 9190
1006 AD Amsterdam
The Netherlands

Application

Anti-Tocilizumab is a chimeric rabbit/mouse anti-idiotypic antibody that specifically targets the human therapeutic antibody Tocilizumab. The antibody consists of rabbit variable domains and mouse constant domains. The recombinant antibody binds mainly to free Tocilizumab in samples.

Tocilizumab is a human IgG1/kappa antibody, recognising the interleukin-6 receptor (IL-6R) and inhibiting IL-6 signalling⁽¹⁻⁴⁾.

Anti-Tocilizumab antibody has been evaluated in ELISA, other techniques need to be validated by the user. It is recommended to test the antibody by titration of the product in the used technique, using appropriate negative/positive controls.

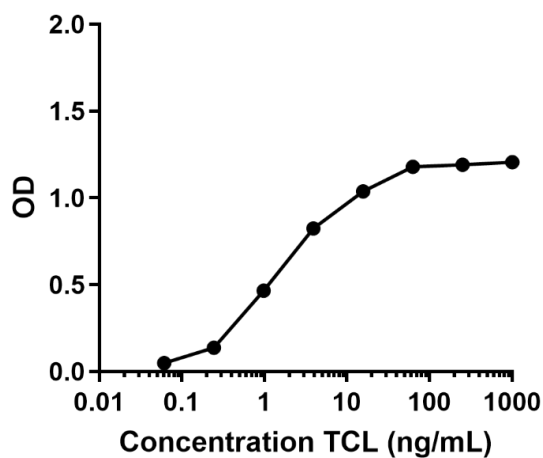


Figure 1: Titration of Tocilizumab to create a pharmacokinetic (PK) curve in bridging ELISA. Anti-Tocilizumab antibody was used as capture (0.25 µg/ml) and detection (0.25 µg/ml) antibody in sandwich assay format as described previously⁽⁵⁾. TCL=Tocilizumab

References

- 1 Sebba A. Tocilizumab: The first interleukin-6-receptor inhibitor. American Journal of Health-System Pharmacy. 2008; 65: 1413–1418. PMID:18653811.
- 2 European Medicines Agency (EMA). Tyenne (tocilizumab). <https://www.ema.europa.eu/en/medicines/human/EPAR/tyenne>. 2023.
- 3 European Medicines Agency (EMA). RoActemra (tocilizumab). <https://www.ema.europa.eu/en/medicines/human/EPAR/roactemra>. 2021.
- 4 European Medicines Agency (EMA). Tofidence (tocilizumab). <https://www.ema.europa.eu/en/medicines/human/EPAR/tofidence>. 2024.
- 5 Großrichter-Wagener C, Kos D, van Leeuwen A, Dijk L, Jeremiasse J, Loeff FC et al. Biased anti-idiotypic response in rabbits leads to high-affinity monoclonal antibodies to biologics. MAbs 2020; 12. PMID:32887534.